

# Challenger Lifts



**Model#: CS1220**  
Heavy-Duty Inground Lift  
12,000 lb. lifting capacity

## **Heavy-Duty Inground Lifts**

Challenger Lifts Heavy-Duty Inground Lifts are ideal for starting or expanding your commercial fleet service capabilities. Heavy-Duty Inground Lifts require less shop space than surface mounted lifts, maximizing the number of service bays.

The CS1220 is equipped with standard, medium and high extension stack adapters to accommodate a wide variety of Heavy-Duty vehicle pick up points. Challenger Heavy-Duty Inground Lifts are fully contained in a recycled polymer housing to protect your investment and the environment.

Challenger is the exclusive manufacturer of the only 15,000 lb. capacity inground lift in the market. The CS1520 Heavy-Duty arms are engineered to lift heavier commercial vehicles.

## Features & Benefits:

- Standard combination stack screw pads accommodate a wide range of vehicle pick up points
- Heavy-Duty 8<sup>1</sup>/<sub>2</sub>" piston diameter reduces wear while lifting Heavy-Duty vehicles
- Fully contained polymer container minimizes risk of hydraulic fluid seeping into the ground as associated with low pressure inground lifts
- 50% taller bearing contact than competitor models provides increased stability
- Mechanical lock engages every 3" allowing technician to work at an ergonomic height to increase productivity and minimize fatigue
- Stainless Steel air lock release cylinder prevents rust associated with condensation
- Many accessories available - reference the Challenger Lifts EnviroLift Accessories sheet for details

## Need a 15,000 lb. Inground Lift?

Challenger Lifts is the exclusive manufacturer of the only 15,000 lb. capacity inground cassette lift in the market.



For more information, contact your Authorized Challenger Lifts Distributor:

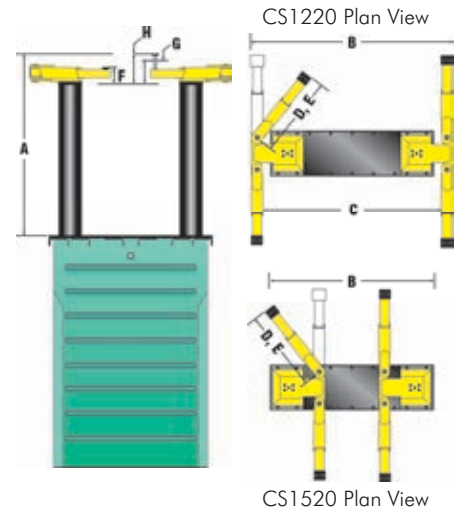
| Model Number  | CS1220  | CS1520   |
|---|---|--|
| Lifting Capacity  | 12,000 lb.<br>(5442kg)                              | 15,000 lb.<br>(6806kg)   |
| <b>A</b> Rise Height <sup>1</sup>                                     | 81"<br>(2057mm)                                     | 84 <sup>1</sup> / <sub>4</sub> "<br>(2140mm)                                     |
| Stroke  | 68"<br>(1727mm)                                     |  |
| <b>B</b> Width Overall  | 99"<br>(2515mm)                                     | 71 <sup>1</sup> / <sub>2</sub> "<br>(1816mm)                                     |
| <b>C</b> Drive-Thru Clearance   | 87"<br>(2210mm)                                     | NA   |
| <b>D</b> Reach (Arm Minimum)  | 32"<br>(813mm)                                      | 26 <sup>1</sup> / <sub>4</sub> "<br>(667mm)                                      |
| <b>E</b> Reach (Arm Maximum)  | 49 <sup>1</sup> / <sub>4</sub> "<br>(1251mm)        | 43"<br>(1092mm)  |
| <b>F</b> Adj. Adapter Height <sup>2</sup>                             | 5 <sup>3</sup> / <sub>8</sub> "-7"<br>(136.5-178mm) | 6 <sup>1</sup> / <sub>2</sub> "-8 <sup>1</sup> / <sub>4</sub> "<br>(165-210mm)   |
| <b>G</b> Adj. Adapter Height <sup>2</sup><br>(with Medium Extensions) | 8 <sup>3</sup> / <sub>8</sub> "-10"<br>(213-254mm)  | 10 <sup>1</sup> / <sub>2</sub> "-12 <sup>1</sup> / <sub>4</sub> "<br>(267-311mm) |
| <b>H</b> Adj. Adapter Height <sup>2</sup><br>(with High Extensions)   | 11 <sup>3</sup> / <sub>8</sub> "-13"<br>(289-330mm) | 14 <sup>1</sup> / <sub>2</sub> "-16 <sup>1</sup> / <sub>4</sub> "<br>(368-413mm) |
| Capacity (per arm)  | 3,000 lb.<br>(1361kg)                               | 3,750 lb.<br>(1701kg)  |
| Motor   | 2HP   | 2HP  |
| Voltage (1 Phase Std.) <sup>3</sup>                                   | 208v-230v   | 208v-230v  |
| Speed of Rise   | 65 Sec.   | 80 Sec.  |
| Air Required  | 75-125 psi  | 75-125 psi   |
| Recommended Ceiling Height<br>(plus height of tallest vehicle)        | 82"<br>(2083mm)                                     | 85"<br>(2159mm)  |

<sup>1</sup> Rise height is measured with superstructure in highest position.

<sup>2</sup> Medium and high auxiliary adapter extensions are standard.

<sup>3</sup> Optional 3 phase power unit also available, please specify at time of order.

### standard features:



CS1520 Plan View



The Automotive Lift Institute (ALI) certifies that the CS1220 & CS1520 described herein comply with the applicable provisions of the American National Standards ANSI/ALI ALCTV 2006 and are Third Party Validated by the ETL Testing Laboratory.

**CHALLENGER LIFTS, INC.** Phone Toll-Free: 800-648-5438  
200 Cabel Street 502-625-0700  
Louisville, Kentucky 40206 Fax: 502-625-0711

E-mail: [sales@challengerlifts.com](mailto:sales@challengerlifts.com)



Challenger Lifts, Inc. reserves the right to make changes to specifications without notice and without making changes retroactive. Unloading, installation and oil not included.