

CL Challenger Lifts



Model#: AV1020WV

AquaVantage™ Inground Lift
Versymmetric® 3-stage front & rear arms
10,000 lb. lifting capacity*

**Introducing a lifting solution
as clear as water.**

AV1020WV

**Versymmetric®
Technology**

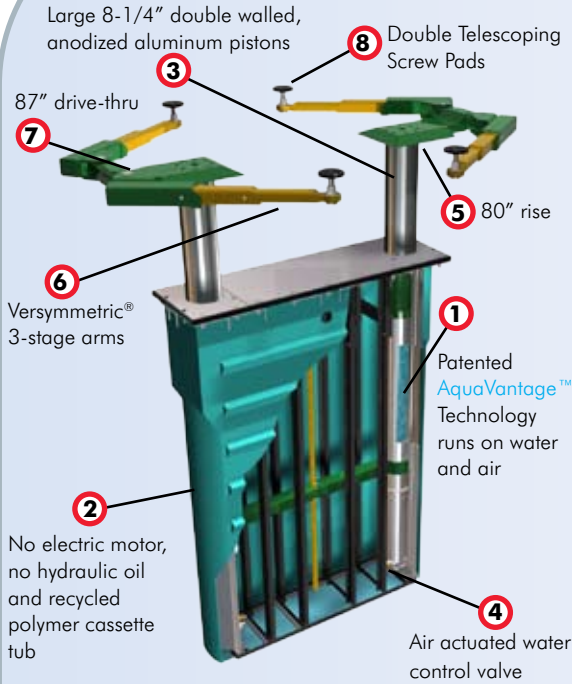
The AV1020WV EnviroLift™ with patented AquaVantage™ Technology uses compressed air and tap water instead of electrical motors and hydraulic oil, making it the most environmentally friendly automotive lift on the market, a RealGREEN™ product.

No high pressure cylinders, fewer moving parts, and lifting mechanisms that are service accessible from the surface means an overall lower cost of ownership. And since it's powered by the air pressure you already have, there are no noisy, energy-consuming motors.

The moment you see its gleaming pistons rise from the floor you'll understand why it's a better solution to lifting. Its advantages are clear as water.

realGREEN™
earth friendly product

Features & Benefits:



- 1 Providing an energy efficient lifting solution that is the most environmentally friendly automotive lift on the market
- 2 Provide a RealGREEN™ earth friendly product
- 3 Provide stability, corrosion-resistance and a stunning showroom-like appearance
- 4 Allows for positive ascent and descent
- 5 Provides maximum head room for working underneath vehicles
- 6 Lift both symmetrically and asymmetrically to maximize service capabilities and revenue potential
- 7 Allows easy vehicle drive-on
- 8 Reach multiple vehicle pickup point heights reducing the need for adapters

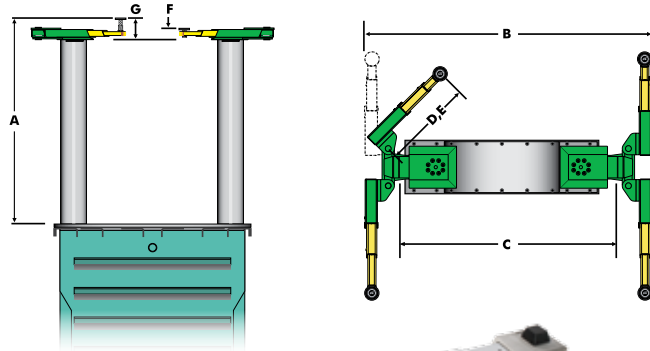
For more information, contact your Authorized Challenger Lifts Distributor:

AV1020WV	Specifications
Lifting Capacity*	10000 lb. (4536kg)
Stroke	73" (1854mm)
A Rise Height ¹	80" (2032mm)
B Width Overall	110" (2794mm)
C Drive-Thru Clearance	87" (2210mm)
D Reach (Arm Minimum)	19 5/8" (498mm)
E Reach (Arm Maximum)	42" (1067mm)
F Rubber Pad Adapter Min. ²	3 7/8" (98mm)
G Rubber Pad Adapter Max. ²	7 1/8" (181mm)
Capacity (Per Arm)	2500 lb. (1134kg)
Speed of Rise	Approx. 40 Seconds
Operating Pressure (Air Required)	200 psi
Recommended Ceiling Height	84" (2134mm) plus height of tallest vehicle

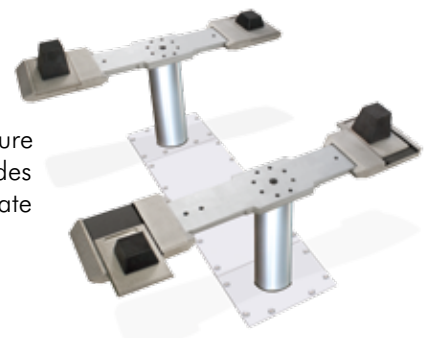
* 10,000 lb. lifting capacity with 200 psi.

¹ Rise height is measured with superstructure in highest position.

² Specifications are listed without rubber pad, for measurements with rubber pad add 1/4" (6mm).



Optional pad superstructure with 4-way directional slides that adjust to accommodate vehicle lifting points.



Ergonomic power control unit with pneumatic switching, integrated air pressure gauge and keyed lockout safety feature for convenience and simple, seamless operation.



The Automotive Lift Institute (ALI) certifies that the AV1020WV described herein complies with the applicable provisions of the American National Standards ANSI/ALI ALCTV 2006 and is Third Party Validated by the ETL Testing Laboratory.

CHALLENGER LIFTS, INC. Phone Toll-Free: 800-648-5438
 200 Cabel Street 502-625-0700
 Louisville, Kentucky 40206 Fax: 502-625-0711
 E-mail: sales@challengirlifts.com

Challenger Lifts, Inc. reserves the right to make changes to specifications without notice and without making changes retroactive. Unloading, installation and water not included.